

# Cement

8x8 DECO *porcelain collection*



**CANCO'S**  
TILE & STONE

# Etna Aster BLACK



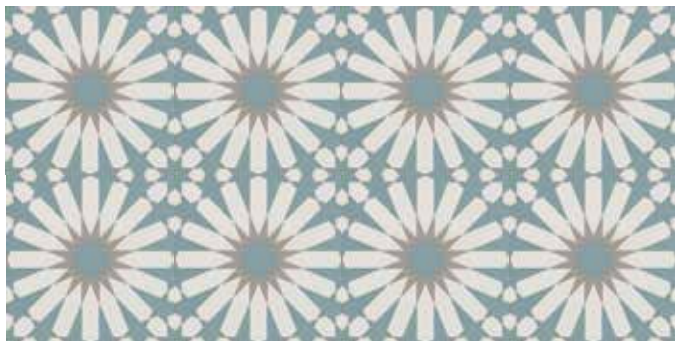
CEPEABKD1A2



# Etna Aster BLUE



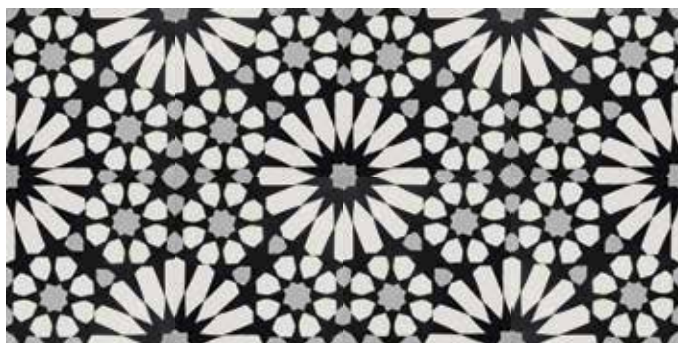
CEPEABLD1A1



# Etna Big Aster BLACK



CEPEBBKD1B2



# Etna Big Aster BLUE



CEPEBBLD1B1



# Etna Cosmos BLACK



CEPECBKD1C1



# Geometric BLACK



CEPGEBKD2B1



# Geometric BLUE



CEPGEBLD2A1



# Geometric TAUPE



CEPGETAD2C1



# Originale Bali BLACK+WHITE



CEPOBBWD3B1



# Originale Bali BLUE



CEPOBBLD3B2



# Originale Nordic GREEN



CEPONGND4A1



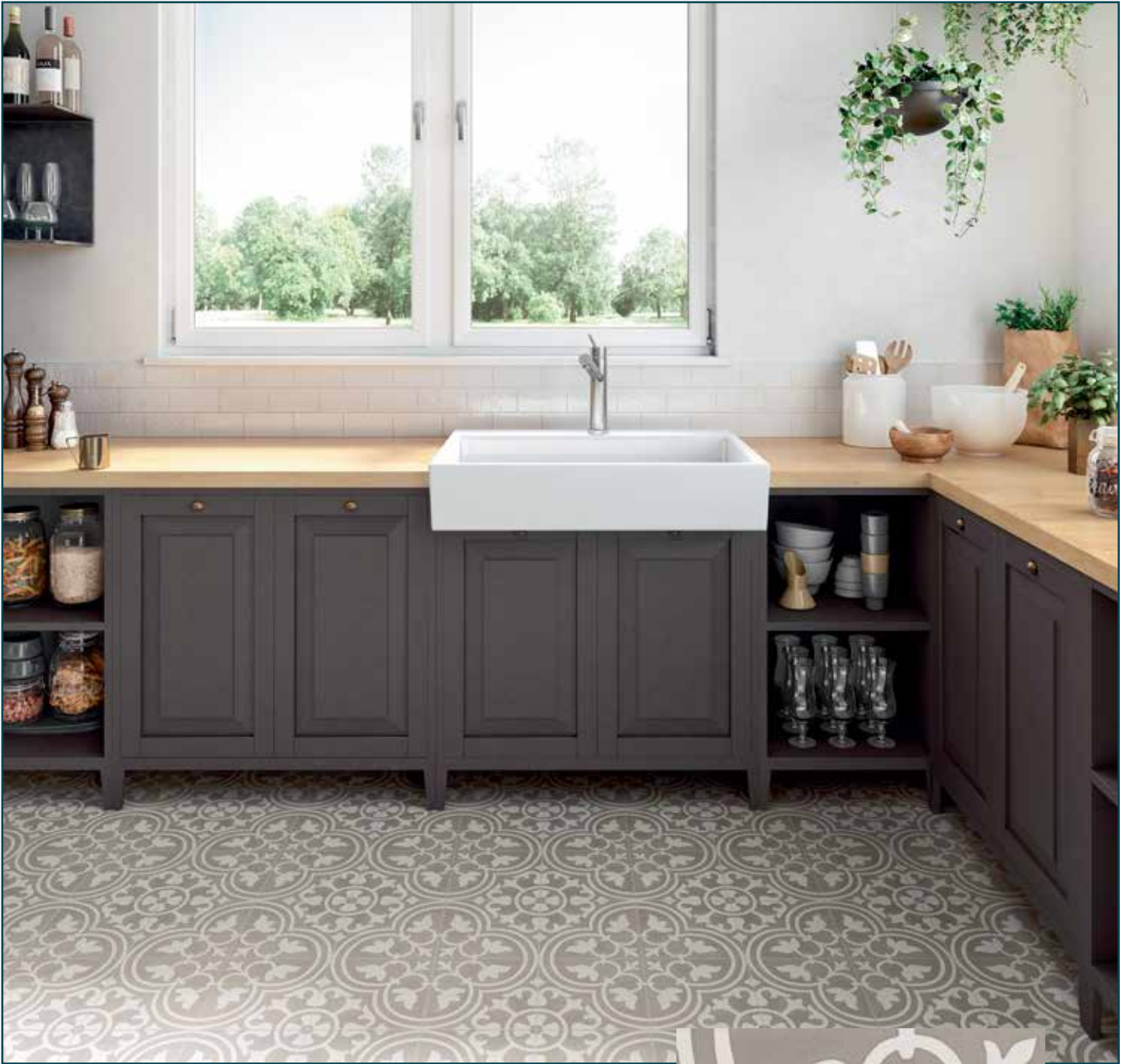
# Originale Clover GREY



CEPOCGRD3C1



# Originale Clover TAUPE



CEPOCTAD3C4



# Originale Deco GREY



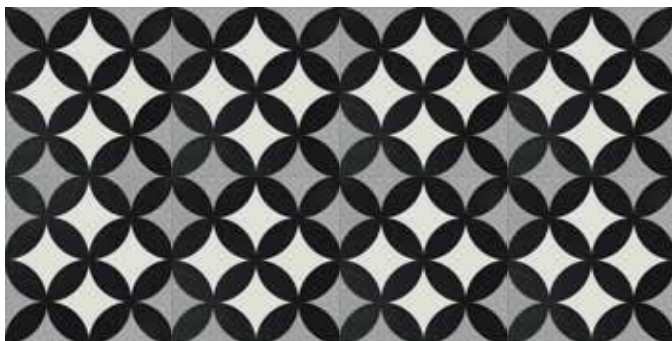
CEPODGRD3D1



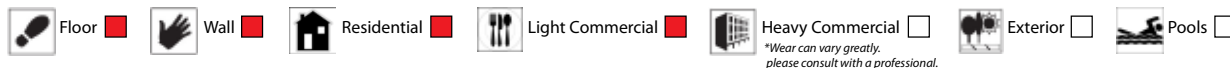
# Originale Deco TAUPE



CEPODTAD3D3



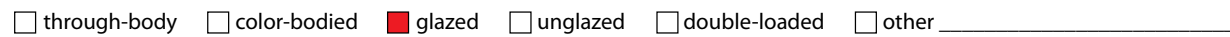
## Suggested Applications



## Installation Suggestions



## Porcelain Type



## Shade Variation



## Slip Resistance

DCOF	Values	Applications
<input checked="" type="checkbox"/> .68	0.42	Recommended Standard DCOF value for wet/dry commercial flooring
	0.65	Recommended Standard DCOF value for ADA ramps

DIN 51130 \*R9: Industry Standard/ADA Requirements \*\*R11: Recommended For Exteriors

R9\* (3-10°)  R10 (10-19°)  R11\*\* (19-27°)  
 R12 (27-35°)  R13 (>35°)

ASTM C-1028  
 ANSI A137.1  
 DIN 51097/51130

DIN 51097

Class	Typical Applications	Critical Angle
<input checked="" type="checkbox"/> A	Barefoot, but mainly dry aisles and walkways, dry changing areas	≥12°
<input type="checkbox"/> B	Shower rooms, pool surrounds, wet changing areas, disinfectant spray areas (plus all Class A areas)	≥18°
<input type="checkbox"/> C	Areas constantly under water, e.g. steps into pools, foot baths, included pool surrounds, jacuzzis (plus all Class A&B areas)	≥24°

## Scratch Resistance

MOH'S SCALE  
 UNI EN ISO  
 10545.6

MINERAL	
1. Talc (Talc)	6. Microline (Glass, Glazed Tile)
2. Gypsum (Fingernail)	7. Quartz (Unglazed Porcelain)
3. Calcite (Penny)	8. Topaz (Granite)
4. Flourite (Some Marbles)	9. Corundum (Ruby)
5. Apatite (Knife Blade)	10. Diamond (Diamond)

Industry standard ≤175mm<sup>2</sup>

## Wear Resistance

PEI RATING  
 UNI EN ISO  
 10545.7

- Class 1: Walls only
  - Class 2: Residential floors w/minimal abrasive traffic
  - Class 3: Residential interiors/light commercial traffic
  - Class 4: Medium commercial applications
  - Class 5: All commercial applications/heavy traffic
- \*Wear can vary greatly, please consult with a professional.

## Stain Resistance

ASTM C1378-04  
 UNI EN ISO  
 10545.14

- 5: Removed after 5 minutes (hot water running)
- 4: Removed by manual cleaning (weak detergent)
- 3: Removed by mechanical cleaning (strong detergent)
- 2: Removed by immersion (24 hrs in suitable solvent)
- 1: Stain not removed

## Water Absorption

ASTM C-373  
 UNI EN ISO  
 10545.3

Absorbs 0-.5%	Absorbs .5-3%	Absorbs 3-7%	Absorbs 7% +
<input checked="" type="checkbox"/> Impervious Interior/Exterior Frost Resistant	<input type="checkbox"/> Vitreous Interior/Exterior Frost Resistant	<input type="checkbox"/> Semi-Vitreous Indoor Use Only	<input type="checkbox"/> Non-Vitreous Indoor Use Only

## Breaking Strength

ASTM C648  
 UNI EN ISO  
 10545.4



## Facial Dimension

ASTM c499-09  
 UNI EN ISO  
 10545.02

	Standard	Tolerance	Result
flatness	±5mm	±.5%	PASS
thickness	±6mm	±.5%	PASS
straightness	±4.5mm	±.5%	PASS
squareness	±5.4mm	±.6%	PASS
sides L/W	±1.1mm ±4.5mm	±.5%	PASS

## Chemical Resistance

ASTM C650  
 UNI EN ISO  
 10545.13

Allowances for:

	result
Acid	PASS
Bases	PASS
Chemicals	PASS

## Leed Information

REQUIREMENTS FOR COMMERCIAL INTERIORS/NEW CONSTRUCTION

Sustainable Sites	1 Point	Materials & Resources	1 Point	2 Points
Site selection	1 Point	M&R CREDIT 2	1 Point	2 Points
SS CREDIT 1		Construction Waste Management: Recycling salvaged construction waste in to new reusable materials.	50% <input type="checkbox"/>	70% <input type="checkbox"/>
Heat Island Effect-non roof	<input type="checkbox"/>	M&R CREDIT 4.1-4.2	10% <input type="checkbox"/>	20% <input type="checkbox"/>
Material with a solar reflectant index of at least 29.		Recycled Content: The sum of post consumer plus 1/2 of the pre consumer reps at least 10-20% of total value of materials.	10% <input type="checkbox"/>	20% <input type="checkbox"/>
Energy & Atmosphere	1 Point	M&R CREDIT 5	10% <input type="checkbox"/>	20% <input type="checkbox"/>
EA CREDIT 4		Regional Materials: Materials manufactured within 500 miles of the project site.	10% <input type="checkbox"/>	20% <input type="checkbox"/>
Green Power: Products that optimize energy performance for floors and walls using thermal conductivity. BTU-FT	<input type="checkbox"/>	Innovation in Design	1-5 Points	
Indoor Environmental Quality	1 Point	ID CREDIT 1		<input type="checkbox"/>
Low-Emitting Materials-Flooring Systems		Innovation in Design	Measurable exemplary environmental performance.	
IEQ CREDIT 3.1-7				
Green Cleaning: Reducing occupants exposure to hazardous cleaning chemicals.	<input type="checkbox"/>			
IEQ CREDIT 4.1				
Low Emitting Adhesives: Products less than 65 G/L VOC	<input type="checkbox"/>			
IEQ CREDIT 4.3				
Low Emitting Materials: Flooring systems.	<input type="checkbox"/>			

Type: Porcelain Stoneware

Product Line: Cement

\*The marketing name for this product is property of Cancos Tile & Stone. This same product may be marketed under different names.\*